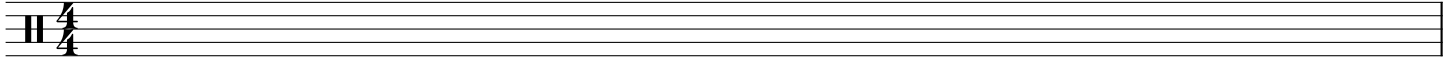


Video 1er rythme



♩ = 30 1 et 2 et 3 et 4 et

2

A musical staff with a 4/4 time signature. It contains four measures of music. Each measure starts with a quarter note on the second line (G4). Above each note is a bracket with 'x' at both ends, indicating a rhythmic exercise. The word 'et' is written above the second and fourth notes. The tempo is marked as ♩ = 30. A '2' is written to the left of the first measure. The staff ends with a double bar line and repeat dots.